

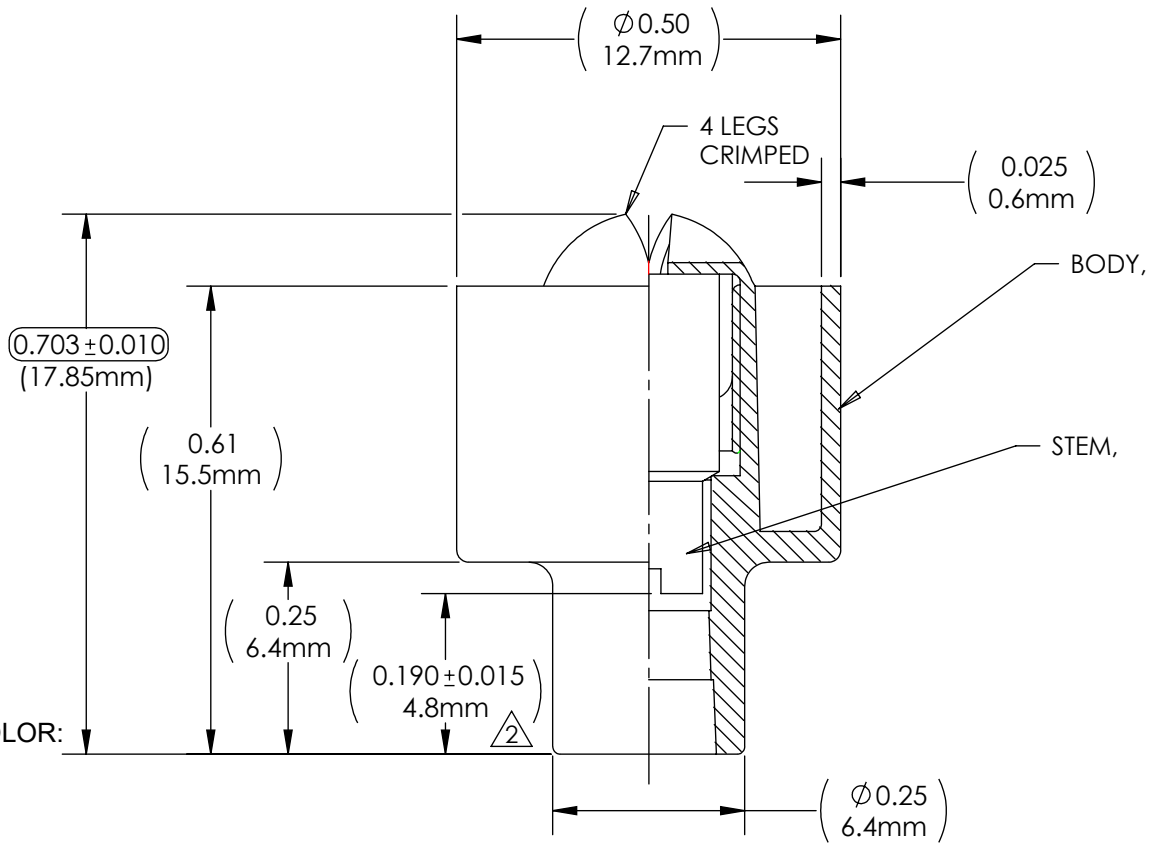
DRAWING NO.  
**CV24500X**

REV  
**N**

# Customer Drawing

## REVISION HISTORY

REV	DESCRIPTION (ECO)	DATE	APPROVED
M	UPDATE NOTE 6. ECO 6853	2/22/16	AK
N	REMOVE BK SUFFIX ECO 8175	7/25/18	AK



**NOTES:**

1. FIRST SUFFIX INDICATES COLOR:

- B- BLUE      R- RED
- Y- YELLOW    W- WHITE
- G- GREEN     O- ORANGE
- P- PURPLE

② .19 HEIGHT TO BE MEASURED AFTER INITIAL ACTIVATION.

- 3. CRITICAL DIMENSIONS ARE CIRCLED, AND SUBJECT TO INSPECTION.
- 4. DIMENSIONS IN PARENTHESES ARE FOR REFERENCE ONLY.
- 5. ALL DIMENSIONS ARE IN INCHES WITH NOMINAL, DIMENSIONS IN MILLIMETERS BELOW.
- 6. LUER COMPATIBLE WITH ISO594-1.

QUALITY CRITERIA:
O.D. FLASH: 0.015 MAX. (0.4MM)
GATE VESTIGE: 0.01 MAX. (0.3MM)
EMBEDDED PARTICLES, BUBBLES, SPOTS, STAINS: 0.3mm <sup>2</sup> MAX. NO MORE THAN 3 PER PART.

**MOLDED PARTS:**  
GATES, PARTING LINES, AND FLASH PER QUALITY CRITERIA

**PROPRIETARY AND CONFIDENTIAL**  
THE INFORMATION CONTAINED IN THIS DRAWING IS SOLE PROPERTY OF HALKEY-ROBERTS CORPORATION ST. PETERSBURG, FL. ANY REPRODUCTION IN PART OR AS A WHOLE WITHOUT THE WRITTEN PERMISSION OF HALKEY-ROBERTS CORPORATION IS PROHIBITED.

<b>DRAWN BY</b>	MS	<b>DATE</b>	12/05/85
<b>APPROVED BY</b>	JW	<b>DATE</b>	12/05/85
<b>MATERIAL</b>			
<b>FINISH</b>			
<b>UNLESS OTHERWISE SPECIFIED:</b>	<b>THIRD ANGLE PROJECTION</b>		
DIMENSIONS ARE IN INCHES TOLERANCES: ANGULAR: ± 1° TWO PLACE DECIMAL ± .01 THREE PLACE DECIMAL ± .005			

**HR® Halkey-Roberts®**

**TITLE**  
**CATHETER VALVE ASSY.**

**DRAWING NO.**  
**CV24500X**

**REV**  
**N**

**SCALE**  
1:1

**DO NOT SCALE DRAWING**

**SHEET**  
1 OF 2