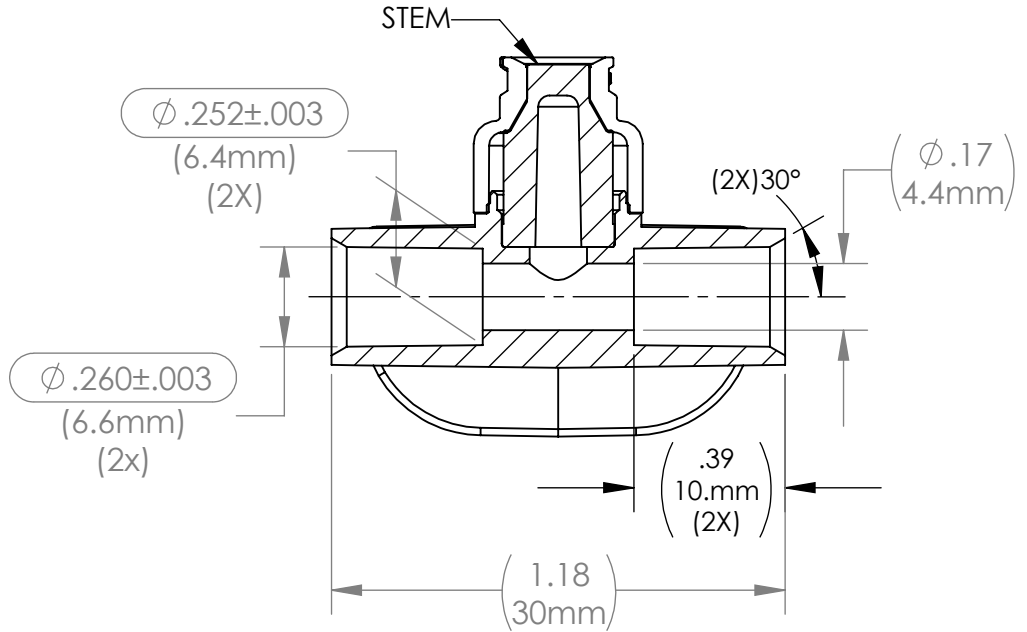
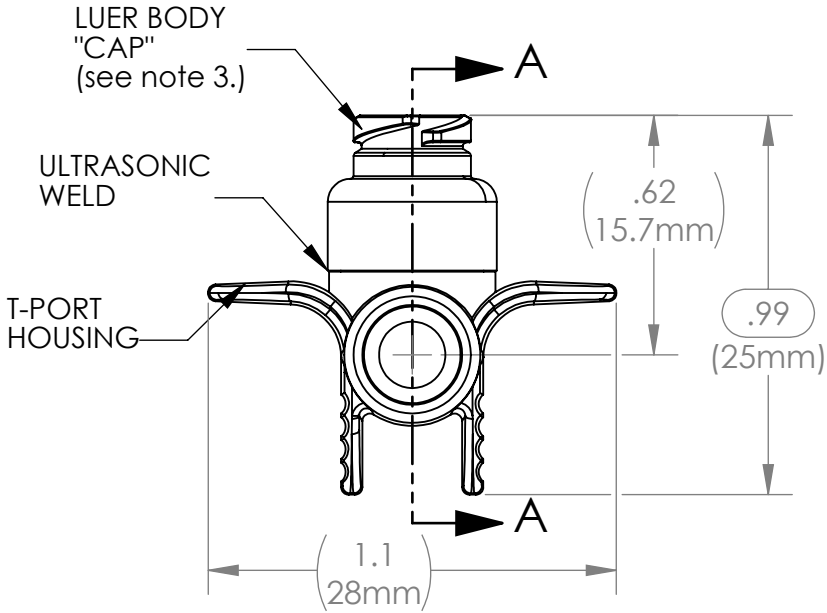


DRAWING NO. C245425024X	REV H	Customer Drawing	REVISION HISTORY			
			REV	DESCRIPTION (ECO)	DATE	APPROVED
			G	ADD SUFFIX "Y" YELLOW, MOVE BOM TO SHEET 2. ECO 7129	9/13/16	AK
			H	ADD ISO80369-7 TO NOTE, ECO 8017	4/30/18	AK



SECTION A-A

- NOTES:
- SUFFIX "X" INDICATES LUER BODY CAP COLOR (SEE TABLE) SHEET 2.
 - TUBE PORT FITS 6.8 MM (.268") O.D. TUBING
 - LUER COMPATIBLE WITH ISO594-2 , AND ISO80369-7.
 - CRITICAL DIMENSIONS CIRCLED AND SUBJECT TO INSPECTION

VALVE SPECIFICATIONS:
 BACK PRESSURE: >30 PSI (2.1 BAR), 40 PSI NOMINAL
 MATERIALS: DEHP FREE, NOT MADE WITH NATURAL RUBBER LATEX
 BIOCOMPATABILITY: PASSES ISO 10993, PART 1
 STERILIZATION: ETO, GAMMA (BASED ON MATERIAL SPECIFICATIONS)

QUALITY CRITERIA
O.D. FLASH: 0.015 (0.4mm) MAX.
GATE VESTIGE: 0.01 (0.3mm) MAX.
EMBEDDED PARTICLES, BUBBLES, SPOTS, STAINS: 0.3mm² MAX., NO MORE THAN 3 PER PART

MOLDED PARTS: GATES, PARTING LINES, AND FLASH PER QUALITY CRITERIA
PROPRIETARY AND CONFIDENTIAL THE INFORMATION CONTAINED IN THIS DRAWING IS SOLE PROPERTY OF HALKEY-ROBERTS CORPORATION ST. PETERSBURG, FL. ANY REPRODUCTION IN PART OR AS A WHOLE WITHOUT THE WRITTEN PERMISSION OF HALKEY-ROBERTS CORPORATION IS PROHIBITED.

DRAWN BY DMC	DATE 10/08/12
APPROVED BY	DATE
MATERIAL	
FINISH	
UNLESS OTHERWISE SPECIFIED: DIMENSIONS ARE IN INCHES TOLERANCES: ANGULAR: ± 1° TWO PLACE DECIMAL ± .01 THREE PLACE DECIMAL ± .005	THIRD ANGLE PROJECTION

HR® Halkey-Roberts®			
T-PORT VALVE, PC			
SIZE A	DRAWING NO. C245425024X	REV H	
SCALE 2:1	DO NOT SCALE DRAWING	SHEET 1 OF 2	