

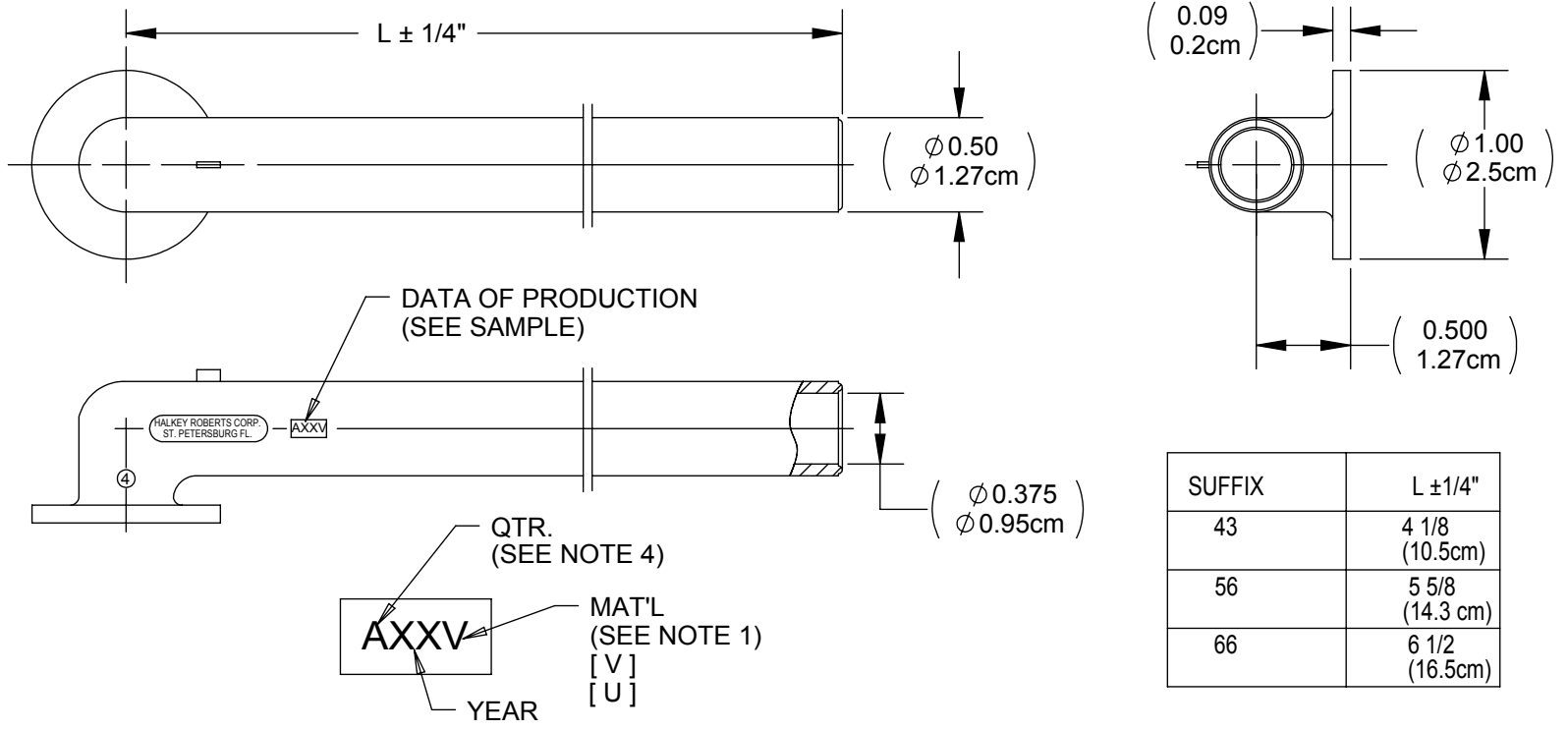
DRAWING NO.  
**C727ACUXXX**

REV  
**E**

# Customer Drawing

## REVISION HISTORY

REV	DESCRIPTION (ECO)	DATE	APPROVED
D	UPDATE NOTES ADD METRIC DIM'S. UPDATE BORDER. REMOVE "N" SUFFIX OPTION ECO 4211	10/12/09	AK
E	ADD TEXIN MAT. AS ALTERNATE SEE NOTE 1. ECO 7809	01/02/18	LF



SUFFIX	L ±1/4"
43	4 1/8 (10.5cm)
56	5 5/8 (14.3 cm)
66	6 1/2 (16.5cm)

TOOLING	PART NO.	IFU
SEALING DIE: OR	SD727 D727AC	----- -----

NOTES:

- FIRST SUFFIX "X" INDICATES MATERIAL:  
NO SUFFIX - PVC/POLYURETHANE BLEND - [V]  
S - POLYETHER URETHANE ESTANE, OR TEXIN - [U]
- SECOND SUFFIX "X" INDICATES "L" LENGTH (SEE TABLE)
- THIRD SUFFIX "X" INDICATES COLOR:  
NO SUFFIX - RED  
BK - BLACK
- FOR QUARTERLY IDENTIFICATION USE:  
A - FIRST QUARTER  
B - SECOND QUARTER  
C - THIRD QUARTER  
D - FOURTH QUARTER
- CRITICAL DIMENSIONS ARE CIRCLED AND SUBJECT TO INSPECTION.
- DIMENSIONS IN PARENTHESES ARE FOR REFERENCE ONLY.
- ALL DIMENSIONS ARE IN INCHES, WITH NOMINAL IN METRIC BELOW.

**MOLDED PARTS:**  
GATES, PARTING LINES, AND FLASH PER QUALITY CRITERIA

**PROPRIETARY AND CONFIDENTIAL**  
THE INFORMATION CONTAINED IN THIS DRAWING IS SOLE PROPERTY OF HALKEY-ROBERTS CORPORATION ST. PETERSBURG, FL. ANY REPRODUCTION IN PART OR AS A WHOLE WITHOUT THE WRITTEN PERMISSION OF HALKEY-ROBERTS CORPORATION IS PROHIBITED.

<b>DRAWN BY</b>	M.S.	<b>DATE</b>	08/08/97
<b>APPROVED BY</b>		<b>DATE</b>	
<b>MATERIAL</b>			
<b>FINISH</b>			
<b>UNLESS OTHERWISE SPECIFIED:</b>	<b>THIRD ANGLE PROJECTION</b>		
DIMENSIONS ARE IN INCHES			
TOLERANCES:			
ANGULAR: ± 1°			
TWO PLACE DECIMAL ±.01			
THREE PLACE DECIMAL ±.005			

**HR® Halkey-Roberts®**

**TITLE**  
**ANGLE CONNECTOR**

**SIZE** A **DRAWING NO.** **C727ACUXXX** **REV** E

**SCALE** 1:1 **DO NOT SCALE DRAWING** **SHEET** 1 OF 1