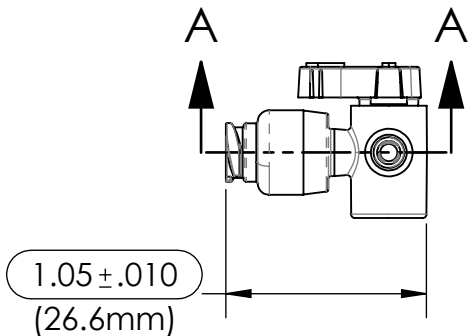
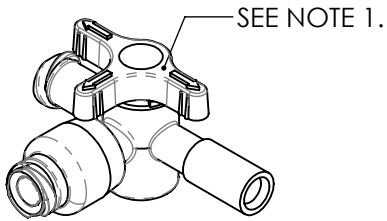
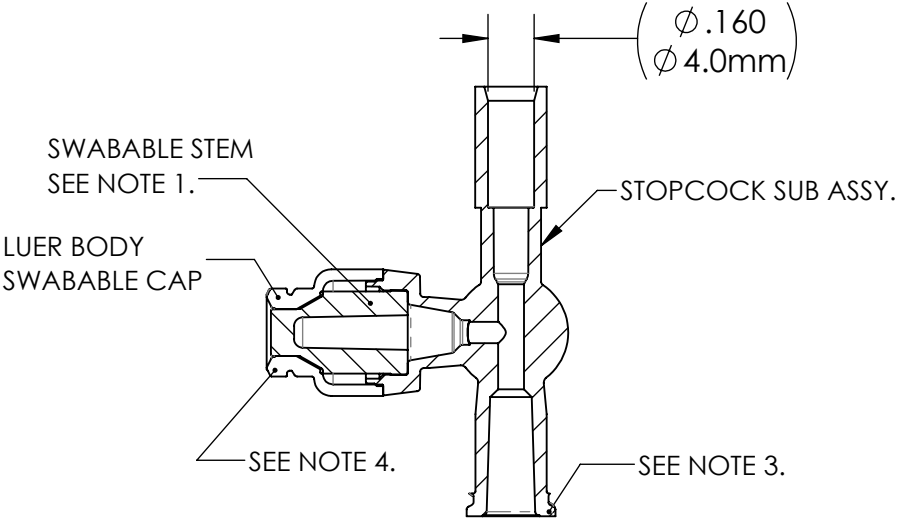
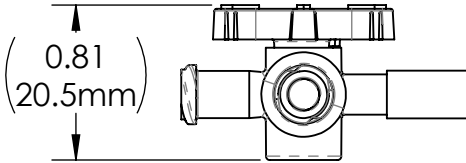
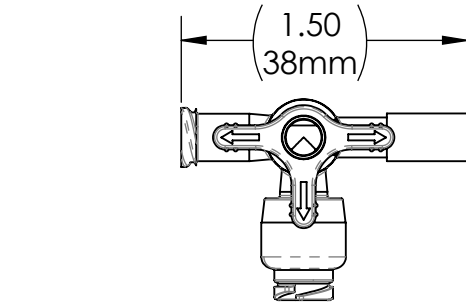


DRAWING NO. <b>C245874X24X</b>	REV <b>D</b>	<b>Customer Drawing</b>	REVISION HISTORY			
			REV	DESCRIPTION (ECO)	DATE	APPROVED
			C	ADD TUBING PORT SIZE 4.0mm ECO 7426	03/30/17	AK
			D	ADD ISO80369-7 TO NOTES, ECO 8017	05/03/18	AK



- NOTES:
- 1ST SUFFIX "X" INDICATES STEM COLOR:  
0 - BLUE  
5 - CLEAR  
2ND SUFFIX "X" INDICATES HANDLE COLOR:  
W - WHITE.
  - CRITICAL DIMENSIONS ARE CIRCLED, AND SUBJECT TO INSPECTION.  
DIMENSIONS IN PARENTHESES ARE FOR REFERENCE ONLY.  
ALL DIMENSIONS ARE IN INCHES WITH NOMINAL IN METRIC BELOW.
  - FEMALE LUER CONFORMS TO ISO594-2.
  - SWABABLE FEMALE LUER COMPATIBLE WITH ISO594-2, AND ISO80369-7.
  - MATERIAL: ALL MATERIALS ARE GAMMA RESISTANT, MEET USP CLASS VI;  
ARE DEHP FREE, AND NOT MADE WITH NATURAL RUBBER LATEX.

QUALITY CRITERIA:
O.D. FLASH: 0.02 MAX. (0.5mm)
GATE VESTIGE: 0.01 MAX. (0.3mm)
EMBEDDED PARTICLES, BUBBLES, SPOTS, STAINS: 0.3mm <sup>2</sup> MAX. NO MORE THAN 3 PER PART.

**MOLDED PARTS:**  
GATES, PARTING LINES, AND FLASH PER QUALITY CRITERIA

**PROPRIETARY AND CONFIDENTIAL**  
THE INFORMATION CONTAINED IN THIS DRAWING IS SOLE PROPERTY OF HALKEY-ROBERTS CORPORATION ST. PETERSBURG, FL. ANY REPRODUCTION IN PART OR AS A WHOLE WITHOUT THE WRITTEN PERMISSION OF HALKEY-ROBERTS CORPORATION IS PROHIBITED.

DRAWN BY DMC	DATE 11/01/16
APPROVED BY	DATE
MATERIAL SEE SHEET 2.	
FINISH	
UNLESS OTHERWISE SPECIFIED: DIMENSIONS ARE IN INCHES TOLERANCES: ANGULAR: ± 1° TWO PLACE DECIMAL ± .01 THREE PLACE DECIMAL ± .005	THIRD ANGLE PROJECTION 

<b>HR® Halkey-Roberts®</b>			
TITLE <b>STOPCOCK W/4.0mm TUBING PORT</b>			
SIZE <b>A</b>	DRAWING NO. <b>C245874X24X</b>	REV <b>D</b>	
SCALE <b>1:1</b>	<b>DO NOT SCALE DRAWING</b>		SHEET <b>1 OF 2</b>