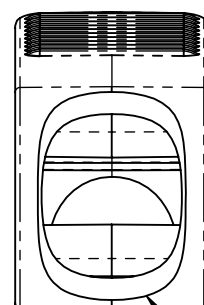
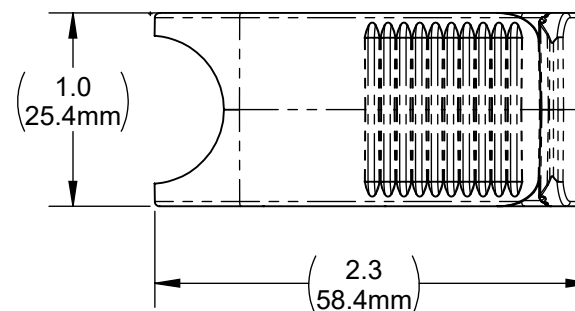
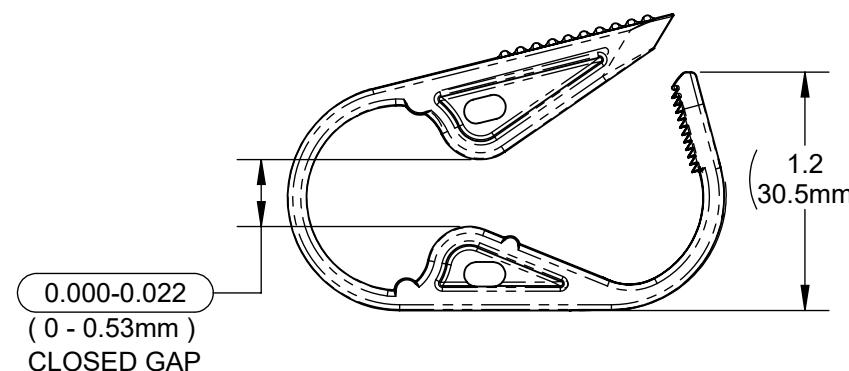


REVISION HISTORY

REV	DESCRIPTION (ECO)	DATE	APPROVED
P	REMOVE ALTERNATE VIEW OF DISCONTINUED PART ECO 6472	4/02/15	AK
R	SHOW CLOSED GAP AS CRITICAL DIM. ECO 10382	03/05/20	AK



—SEE NOTE 6.



NOTES:

1. SUFFIX INDICATES MATERIAL & COLOR:
2. NO SUFFIX - WHITE POLYESTER (VALOX 325M)
B - BLUE POLYESTER (VALOX 325M)
CB - BLUE CELENEX 20002EG 4082 POLYESTER
3. CRITICAL DIMENSIONS ARE CIRCLED AND SUBJECT TO INSPECTION.
4. DIMENSIONS IN PARENTHESES ARE FOR REFERENCE ONLY.
5. ALL DIMENSIONS ARE IN INCHES WITH NOMINAL DIMENSIONS
IN MILLIMETERS BELOW.
6. MAX TUBING DIA. (0.75").


7. HR TUBING CLAMPS ARE SINGLE PATIENT USE MEDICAL COMPONENTS INTENDED TO BE INCLUDED AS PART OF THE FINISHED DEVICE, I.E. IV ADMINISTRATION SETS. HR TUBING CLAMPS ARE MANUFACTURED TO HR SPECIFICATIONS, SOLD BULK, NON-STERILE TO OEMS. BECAUSE THE CONFIGURATIONS OF IV TUBING VARY DRAMATICALLY, HR CANNOT MAKE ANY PARTICULAR CLAIMS. CUSTOMERS MUST VALIDATE CLAMPS FOR THEIR INTENDED USE, ENSURING THAT THE CLAMPS EFFECTIVELY OCCLUDE THE INHERENT VARIATION OF THE PARTICULAR TUBING EMPLOYED BY THE CUSTOMER AGAINST THE CLOSED GAP RANGE PROVIDED ON HR'S SPECIFICATIONS. OEM MANUFACTURING PROCESSES (SUCH AS ASSEMBLY PROCESSES, PACKAGING AND STERILIZATION) CAN SIGNIFICANTLY ALTER THE CLAMPS' FUNCTIONALITY; THEREFORE, HR CANNOT GUARANTEE THE PERFORMANCE OF THE FINAL CONFIGURATION.

QUALITY CRITERIA

O.D. FLASH 0.015 MAX. (0.4mm)
GATE VESTIGE 0.01 MAX. (0.3mm)
EMBEDDED PARTICLES, BUBBLES, SPOTS, STAINS: 0.3mm ² MAX. NO MORE THAN 5 PER PART.

MOLDED PARTS:
GATES, PARTING LINES, AND FLASH PER QUALITY CRITERIA

PROPRIETARY AND CONFIDENTIAL
THE INFORMATION CONTAINED IN THIS DRAWING IS SOLE PROPERTY OF HALKEY-ROBERTS CORPORATION ST. PETERSBURG, FL. ANY REPRODUCTION IN PART OR AS A WHOLE WITHOUT THE WRITTEN PERMISSION OF HALKEY-ROBERTS CORPORATION IS PROHIBITED.

DRAWN BY DMC		DATE 5/14/2013	HR® Halkey-Roberts®			
APPROVED BY		DATE				
MATERIAL						
FINISH			TITLE TUBING CLAMP, LARGE			
UNLESS OTHERWISE SPECIFIED: DIMENSIONS ARE IN INCHES TOLERANCES: ANGULAR: ± 1° TWO PLACE DECIMAL: ± .01 THREE PLACE DECIMAL: ± .005		THIRD ANGLE PROJECTION 		SIZE	DRAWING NO.	REV
				B	C340TCLX	R
				SCALE 1:1	DO NOT SCALE DRAWING	SHEET 1 OF 2